

Recombinant Interleukin 31 (IL31)

Catalog No.: TD-TP02635 100µg

Sequence Information

Species: Canine

Gene ID:100302725

Swiss Prot:A0A8C0PEY7

Synonyms:

Residues:Ser24-Gln159

SHMAPTHQLPPSDVRKIIILELQPLSRGLLEDYQKKETGVPESNRTLLLCLTSDSQPRLNSSAILPYFRAIRPLSDKN
IIDKIIIEQLDKLKFQHEPETEISVPADTFECKSFILTILQQFSACLESVFKSLNSGPQ

Product Information

Source: Prokaryotic expression.

Host: *E. coli*

Tags: N-terminal His-Tag.

Subcellular Location: Membrane.

Purity: >90%

Traits: Freeze-dried powder

Buffer formulation: 20mM Tris, 150mM NaCl, pH8.0, 5% Trehalose.

Original Concentration: 200µg/mL

Applications: Positive Control; Immunogen; SDS-PAGE; WB.

(May be suitable for use in other assays to be determined by the end user.)

Predicted isoelectric point:5.8

Predicted Molecular Mass: 16.1kDa

Accurate Molecular Mass: 16kDa as determined by SDS-PAGE reducing conditions.

[USAGE]

Reconstitute in ddH₂O to a concentration of 0.1-0.5 mg/mL. Do not vortex.

[STORAGE AND STABILITY]

Storage: Avoid repeated freeze/thaw cycles.

Store at 2-8°C for one month.

Aliquot and store at -80°C for 12 months.

Stability Test: The thermal stability is described by the loss rate. The loss rate was determined by accelerated thermal degradation test, that is, incubate the protein at 37°C for 48h, and no obvious degradation and precipitation were observed. The loss rate is less than 5% within the expiration date under appropriate storage condition.

[IDENTIFICATION]

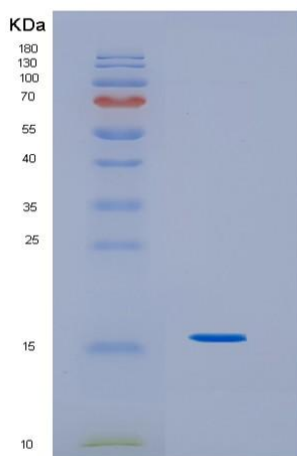


Figure2. SDS-PAGE

[IMPORTANT NOTE]

The kit is designed for in vitro and research use only, we will not be responsible for any issue if the kit was used in clinical diagnostic or any other procedures.