

Eukaryotic Tetraspanin 30 Cluster of Differentiation 63 (CD63)

Catalog No.: TD-TP07513 50µg

Sequence Information

Species: Human

Gene ID:967

Swiss Prot:P08962

Synonyms:TSPAN30; LAMP-3; ME491; MLA1;

OMA81H; Melanoma 1 antigen;

Granulophysin; Lysosomal-associated

membrane protein 3; Ocular

melanoma-associated antigen

Residues:Ala 103-Val 203

AGYVFRDKVMSEFNNNFRQQMENYPKNNHTASILDRMQADFKCCGAANYTDWEK

IPSMKNRVPDSCCINVTGCGINFNEKAIHKEGCVKIGGWLRKNV

Product Information

Source: Eukaryotic expression.

Host: 293F cell

Tags: N-terminal His Tag

Subcellular Location: Membrane.

Purity: >90%

Traits: Freeze-dried powder

Buffer formulation: PBS, pH7.4, containing 0.01% SKL, 1mM DTT, 5% Trehalose and Proclin300.

Original Concentration: 200µg/mL

Applications: Positive Control; Immunogen; SDS-PAGE; WB.

(May be suitable for use in other assays to be determined by the end user.)

Predicted isoelectric point: 6.9

Predicted Molecular Mass: 13.1kDa

Accurate Molecular Mass: 18-33kDa as determined by SDS-PAGE reducing conditions.

[USAGE]

Reconstitute in ddH₂O to a concentration of 0.1-0.5 mg/mL. Do not vortex.

[STORAGE AND STABILITY]

Storage: Avoid repeated freeze/thaw cycles.

Store at 2-8°C for one month.

电话: 027-87561633 手机: 189-8623-2100

QQ客服: 121545059 网址: <http://www.itiande-neuron.com>

公司地址: 武汉东湖新技术开发区高新大道666号光谷生物城生物创新园B1栋b274-9室

Aliquot and store at -80°C for 12 months.

Stability Test: The thermal stability is described by the loss rate. The loss rate was determined by accelerated thermal degradation test, that is, incubate the protein at 37°C for 48h, and no obvious degradation and precipitation were observed. The loss rate is less than 5% within the expiration date under appropriate storage condition.

[IDENTIFICATION]

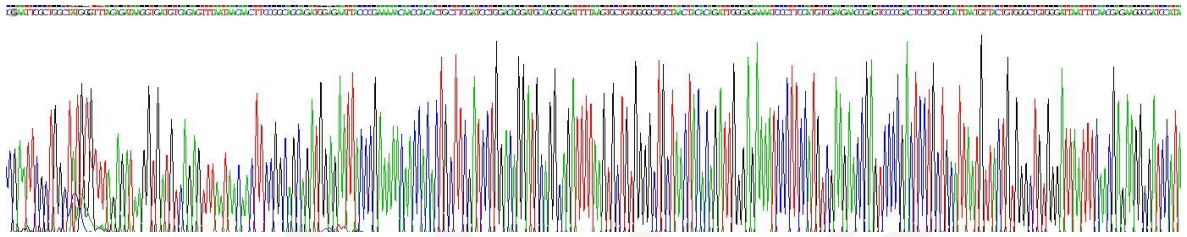


Figure 1. Gene Sequencing (Extract)

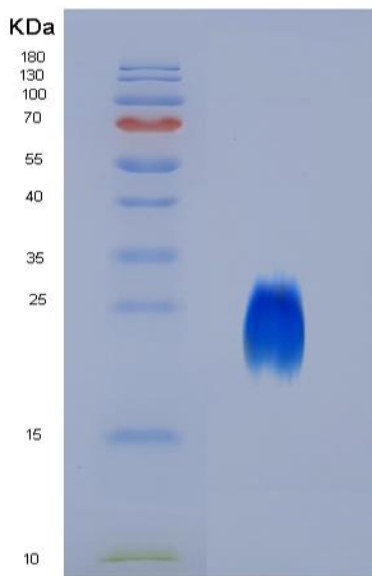


Figure 2. SDS-PAGE

[IMPORTANT NOTE]

The kit is designed for in vitro and research use only, we will not be responsible for any issue if the kit was used in clinical diagnostic or any other procedures.